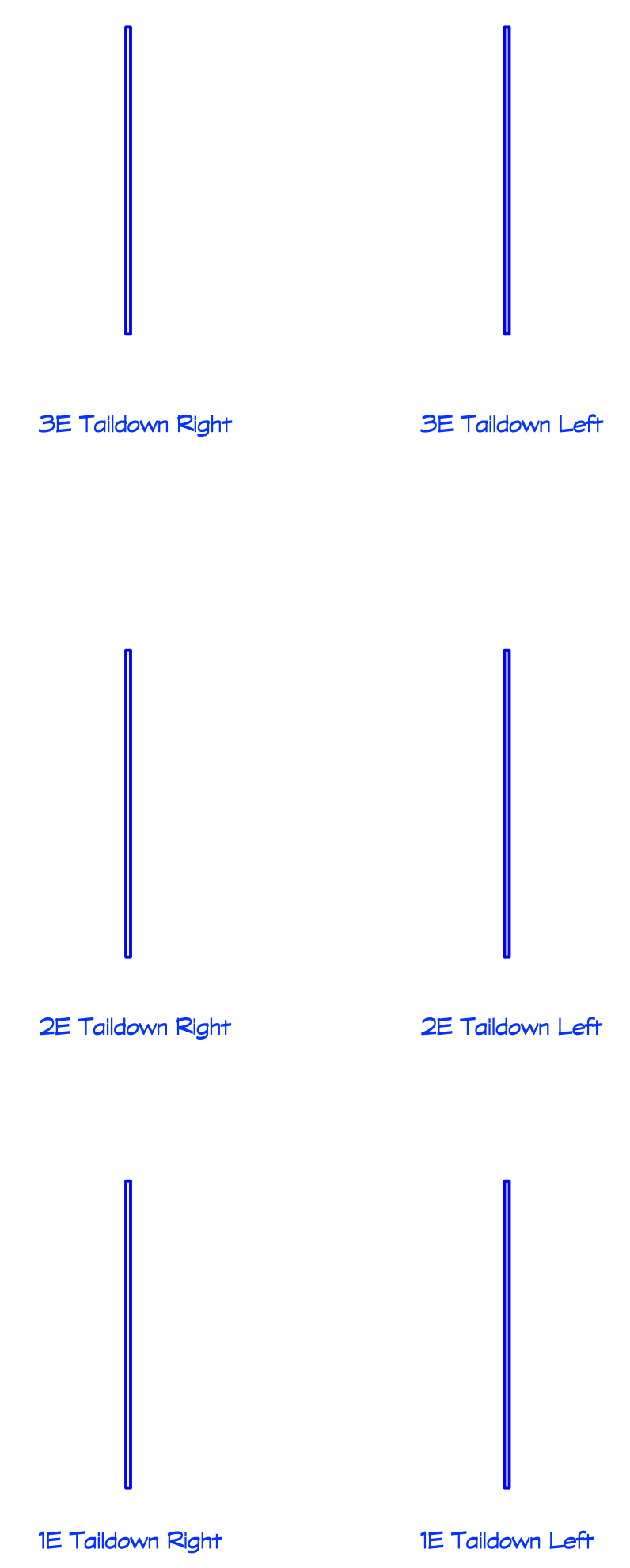
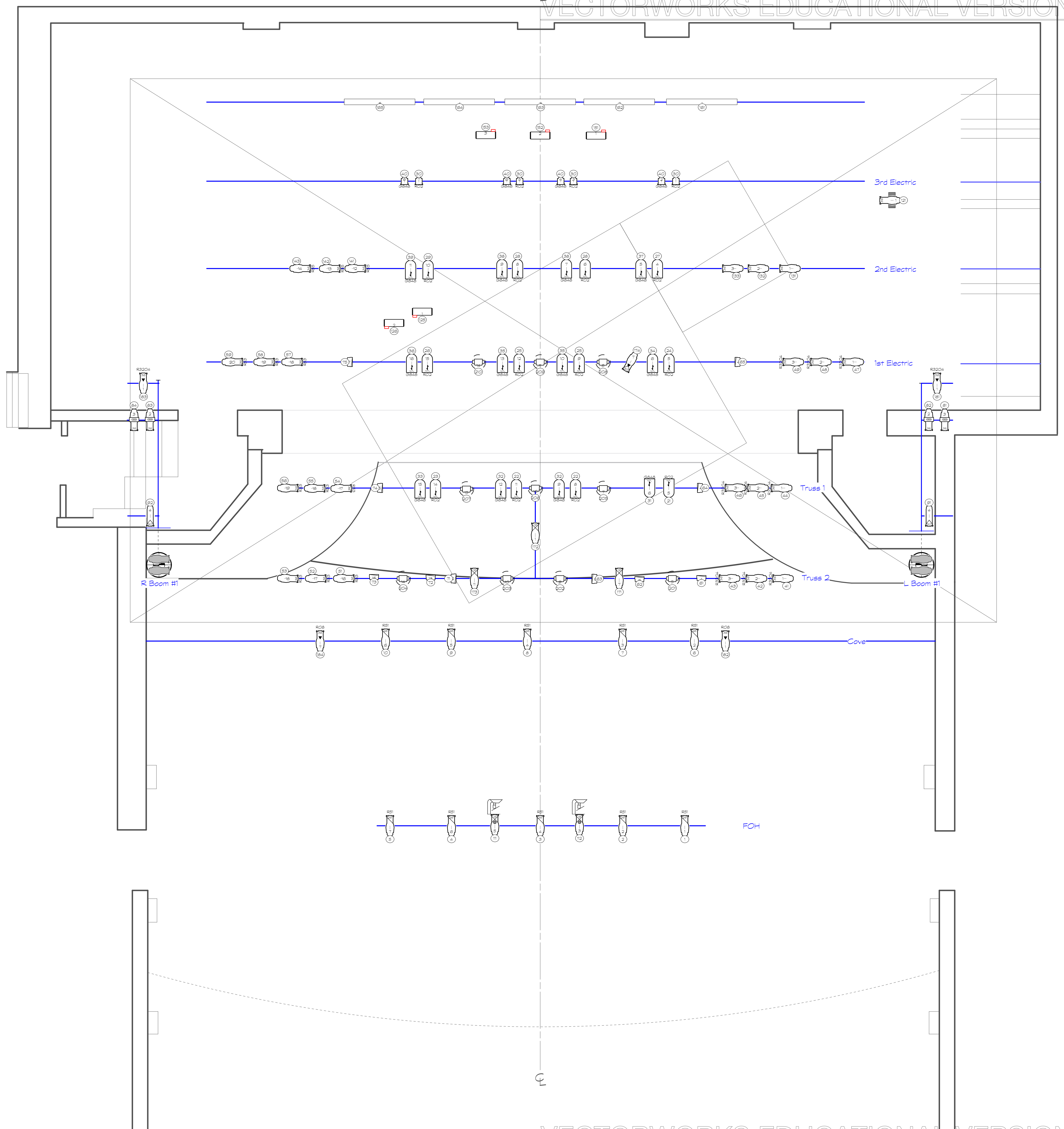


		BORN WITH TEETH Channel Hookup					
Channel	Dimmer	Instrument Type	Wattage	Purpose	Color	Position	Unit Number
1	7	Source Four 26°			R51	FOH	1
2	9	Source Four 26°			R51	FOH	2
3	12	Source Four 26°			R51	FOH	4
4	17	Source Four 26°			R51	FOH	6
5	18	Source Four 26°			R51	FOH	7
6	130	S4 26°			R51	COVE	2
7	128	S4 26°			R51	COVE	3
8	126	S4 26°			R51	COVE	4
9	124	S4 26°			R51	COVE	5
10	21	S4 26°			R51	COVE	6
21	136	PAR64			R02	Truss 1	5
22	134	PAR64			R02	Truss 1	8
	138	PAR64			R02	Truss 1	11
23	68	PAR64			R02	Truss 1	14
24	33	PAR64			R02	1st Electric	5
25	36	PAR64			R02	1st Electric	9
	39	PAR64			R02	1st Electric	12
26	47	PAR64			R02	1st Electric	15
27	71	PAR64			R02	2nd Electric	4
28	81	PAR64			R02	2nd Electric	6
	95	PAR64			R02	2nd Electric	8
29	23	PAR64			R02	2nd Electric	10
30	123	6" Fresnel			R02	3rd Electric	1
	127	6" Fresnel			R02	3rd Electric	3
	135	6" Fresnel			R02	3rd Electric	5
	141	6" Fresnel			R02	3rd Electric	7
31	150	PAR64			G847	Truss 1	6
32	148	PAR64			G847	Truss 1	12
	152	PAR64			G847	Truss 1	9
33	100	PAR64			G847	Truss 1	15
34	31	PAR64			G847	1st Electric	6
35	37	PAR64			G847	1st Electric	10
	41	PAR64			G847	1st Electric	13
36	49	PAR64			G847	1st Electric	16
37	75	PAR64			G847	2nd Electric	5
38	83	PAR64			G847	2nd Electric	7
	97	PAR64			G847	2nd Electric	9
39	24	PAR64			G847	2nd Electric	11
40	125	6" Fresnel			G847	3rd Electric	2
	129	6" Fresnel			G847	3rd Electric	4
	137	6" Fresnel			G847	3rd Electric	6
	143	6" Fresnel			G847	3rd Electric	8
41	72	S4 36°			R3204	Truss 2	1
42	74	S4 36°			R3204	Truss 2	2

43	82	S4 26°			R3204	Truss 2	3
44	154	S4 36°			R3204	Truss 1	1
45	78	S4 36°			R3204	Truss 1	2
46	80	S4 26°			R3204	Truss 1	3
47	26	S4 36°			R3204	1st Electric	1
48	27	S4 36°			R3204	1st Electric	2
49	28	S4 26°			R3204	1st Electric	3
51	104	S4 26°			R53	Truss 2	16
52	106	S4 36°			R53	Truss 2	17
53	102	S4 36°			R53	Truss 2	18
54	142	S4 26°			R53	Truss 1	17
55	146	S4 36°			R53	Truss 1	18
56	140	S4 36°			R53	Truss 1	19
57	51	S4 26°			R53	1st Electric	18
58	53	S4 36°			R53	1st Electric	19
59	55	S4 36°			R53	1st Electric	20
61		Sixpar 200IP	150			Truss 2	4
62	2/311	Sixpar 200IP	150			L Boom #1	6
63	2/299	Sixpar 200IP	150			Truss 2	8
64		Sixpar 200IP	150			Truss 1	4
65		Sixpar 200IP	150			1st Electric	4
71	2/239	Sixpar 200IP	150			Truss 2	12
72	2/251	Sixpar 200IP	150			R Boom #1	13
73		Sixpar 200IP	150			Truss 2	15
74		Sixpar 200IP	150			Truss 1	16
75		Sixpar 200IP	150			1st Electric	17
81	3	Seachanger					3
82	4	Seachanger				L Boom #1	2
83	90	Seachanger				R Boom #1	2
84	92	Seachanger				R Boom #1	3
91	1	S4 Junior 50°				L Boom #1	4
92	19	S4 Junior 50°				R Boom #1	4
111	13	Source Four 19°				FOH	5
112	11	Source Four 19°				FOH	3
121				Door		Boom/Rail	1
125		Chauvet COLORdash Batt	36W	Fireplace			1
126		Chauvet COLORdash Batt	36W	Fireplace			2
131		S4 36°		Diag Bx	R3204	2nd Electric	1
132		S4 36°		Diag Bx	R3204	2nd Electric	2
133		S4 36°		Diag Bx	R3204	2nd Electric	3
141	101	S4 36°		Ropes R	R55	2nd Electric	12
142		S4 36°		Ropes R	R55	2nd Electric	13
143		S4 36°		Ropes R	R55	2nd Electric	14
151	2/415	COLORdash Batt	36W	Cyc Floor		FLOOR	1
152	2/400	COLORdash Batt	36W	Cyc Floor		FLOOR	2
153	2/410	COLORdash Batt	36W	Cyc Floor		FLOOR	3
161		Chroma Q Color Forc	720W	Cyc		Cyc Electric	1
162		Chroma Q Color Forc	720W	Cyc		Cyc Electric	2

163		Chroma Q Color Forc	720W	Cyc		Cyc Electric	3
164		Chroma Q Color Forc	720W	Cyc		Cyc Electric	4
165		Chroma Q Color Forc	720W	Cyc		Cyc Electric	5
171		19°	Chair Special L				7
172		19°		Table			1
173		19°	Chair Special R				11
174		50°		Cross Gobo			7
181		36°		Window L 1	R3204	L Boom #1	1
182		36°		Window L 2	R08		1
183		36°		Window R 1	R3204	R Boom #1	1
184		36°		Window R 2	R08		7
201	2/138-162	MAC Aura	236W	Mover		Truss 2	5
202	2/38-62	MAC Aura	236W	Mover		Truss 2	9
203	2/188-212	MAC Aura	236W	Mover		Truss 2	10
204	2/13/37	MAC Aura	236W	Mover		Truss 2	14
205	2/163-187	MAC Aura	236W	Mover		Truss 1	7
206	2/213-237	MAC Aura	236W	Mover		Truss 1	10
207	2/375-399	MAC Aura	236W	Mover		Truss 1	13
208	2/63-87	MAC Aura	236W	Mover		1st Electric	8
209	2/113-137	MAC Aura	236W	Mover		1st Electric	11
210	2/88-112	MAC Aura	236W	Mover		1st Electric	14



Instruments	
	Mac Aura
	Color-DASH
	Batten
	Eaton SXP/AR
ChromaQ Colorforce 72	
	Fresnel
	PAR64
ETC Source Four	
	18°
	26°
	36°
	50°
	50° JR
	Beastringer 36°
	Practical
Accessories	
	Rosco I-Cue
	Template
	Ins
Legend	
	Color
	Lighting
	Cue

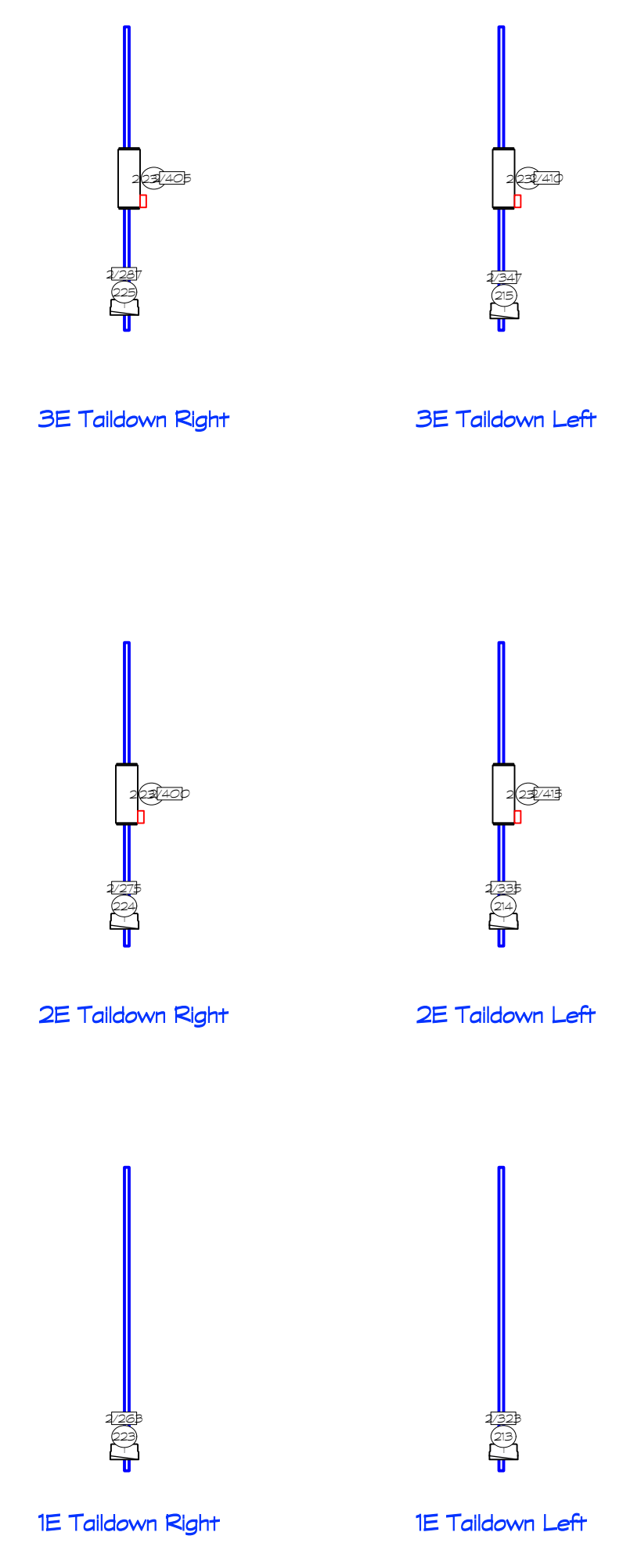
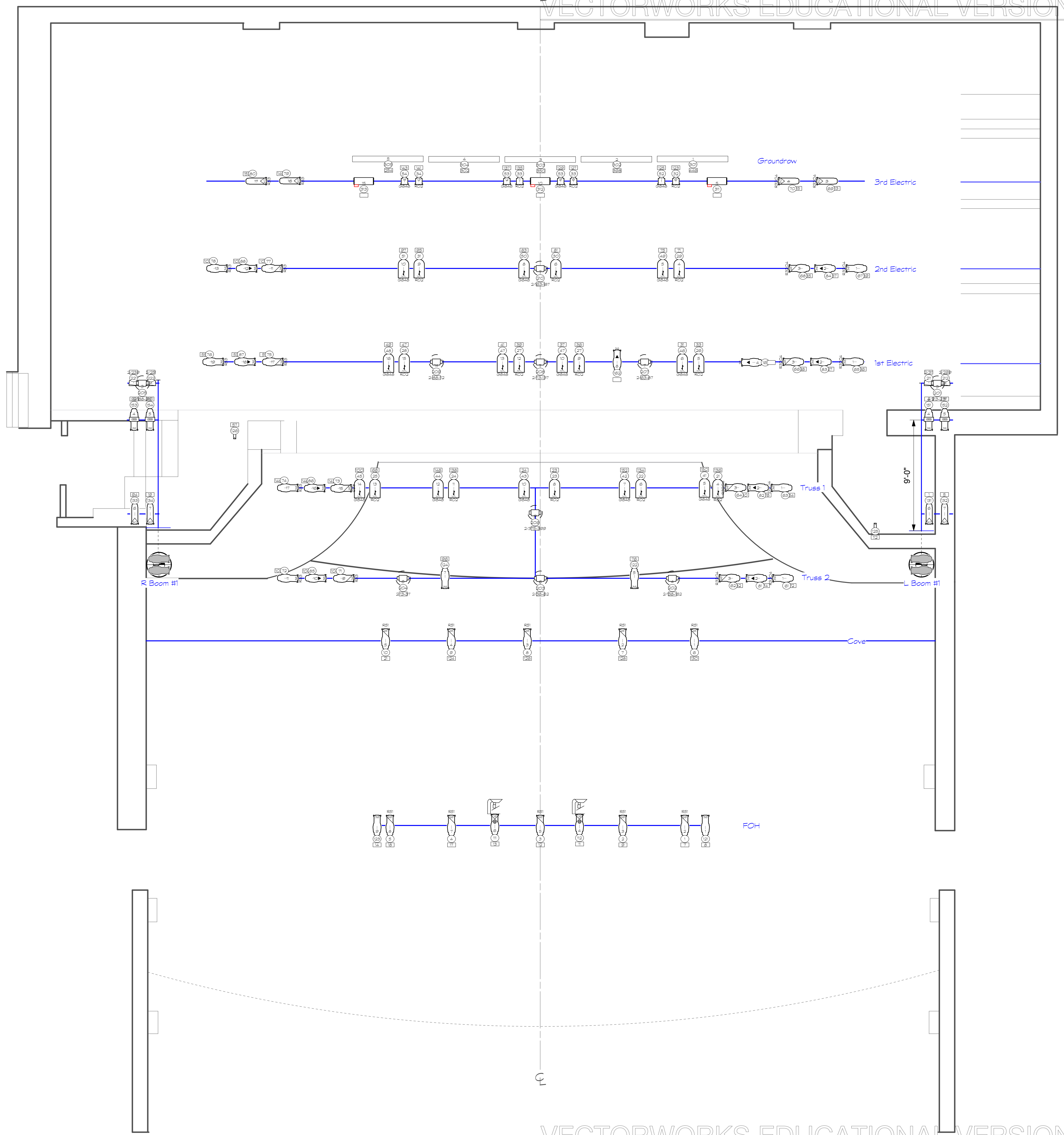
Notes  
 -G847 OR R3220  
 -G888 OR R3202  
 -R55 or R3204  
 \*Fireplace (on 126 +126) TBD

**THE COLOR PURPLE**  
**Channel Hookup**

<b>Channel</b>	<b>Dimmer</b>	<b>Instrument Type</b>	<b>Wattage</b>	<b>Purpose</b>	<b>Color</b>	<b>Position</b>	<b>Unit Number</b>
<b>1</b>	7	Source Four 26°	575w	Front	R51	FOH	2
<b>2</b>	9	Source Four 26°	575w	Front	R51	FOH	3
<b>3</b>	12	Source Four 26°	575w	Front	R51	FOH	5
<b>4</b>	17	Source Four 26°	575w	Front	R51	FOH	7
<b>5</b>	18	Source Four 26°	575w	Front	R51	FOH	8
<b>6</b>	130	Source Four 26°	575w	Front	R51	FOH	1
<b>7</b>	128	Source Four 26°	575w	Front	R51	FOH	2
<b>8</b>	126	Source Four 26°	575w	Front	R51	FOH	3
<b>9</b>	124	Source Four 26°	575w	Front	R51	FOH	4
<b>10</b>	21	Source Four 26°	575w	Front	R51	FOH	5
<b>21</b>	136	PAR64	1K	Wm Bx	R02	Truss #1	4
<b>22</b>	134	PAR64	1K	Wm Bx	R02	Truss #1	6
<b>23</b>	23	PAR64	1K	Wm Bx	R02	Truss #1	8
<b>24</b>	138	PAR64	1K	Wm Bx	R02	Truss #1	11
<b>25</b>	68	PAR64	1K	Wm Bx	R02	Truss #1	13
<b>26</b>	33	PAR64	1K	Wm Bx	R02	1st Electric	5
<b>27</b>	36	PAR64	1K	Wm Bx	R02	1st Electric	9
		PAR64	1K	Wm Bx	R02	1st Electric	12
<b>28</b>	47	PAR64	1K	Wm Bx	R02	1st Electric	15
<b>29</b>	71	PAR64	1K	Wm Bx	R02	2nd Electric	11
<b>30</b>	81	PAR64	1K	Wm Bx	R02	2nd Electric	4
<b>31</b>	95	PAR64	1K	Wm Bx	R02	2nd Electric	6
<b>32</b>	123	6" Fresnel	750w	Wm Bx	R02	3rd Electric	6
<b>33</b>	127	6" Fresnel	750w	Wm Bx	R02	3rd Electric	8
	135	6" Fresnel	750w	Wm Bx	R02	3rd Electric	11
<b>34</b>	141	6" Fresnel	750w	Wm Bx	R02	3rd Electric	13
<b>41</b>	150	PAR64	1K	Cl Bx	G848	Truss #1	5
<b>42</b>	152	PAR64	1K	Cl Bx	G848	Truss #1	7
<b>43</b>	24	PAR64	1K	Cl Bx	G848	Truss #1	10
<b>44</b>	148	PAR64	1K	Cl Bx	G848	Truss #1	12
<b>45</b>	100	PAR64	1K	Cl Bx	G848	Truss #1	14
<b>46</b>	31	PAR64	1K	Cl Bx	G848	1st Electric	6
<b>47</b>	37	PAR64	1K	Cl Bx	G848	1st Electric	10
		PAR64	1K	Cl Bx	G848	1st Electric	13
<b>48</b>	49	PAR64	1K	Cl Bx	G848	1st Electric	16
<b>49</b>	75	PAR64	1K	Cl Bx	G848	2nd Electric	12
<b>50</b>	83	PAR64	1K	Cl Bx	G848	2nd Electric	5
<b>51</b>	97	PAR64	1K	Cl Bx	G848	2nd Electric	8
<b>52</b>	125	6" Fresnel	750w	Cl Bx	G848	3rd Electric	7
<b>53</b>	129	6" Fresnel	750w	Cl Bx	G848	3rd Electric	9
	137	6" Fresnel	750w	Cl Bx	G848	3rd Electric	12
<b>54</b>	143	6" Fresnel	750w	Cl Bx	G848	3rd Electric	14
<b>61</b>	72	Source Four 36°	575w	SL Side	R3204	Truss #2	1
<b>62</b>	82	Source Four 26°	575w	SL Side	R3204	Truss #2	3
<b>63</b>	154	Source Four 36°	575w	SL Side	R3204	Truss #1	1
<b>64</b>	80	Source Four 26°	575w	SL Side	R3204	Truss #1	3
<b>65</b>	26	Source Four 36°	575w	SL Side	R3204	1st Electric	1

<b>66</b>	28	Source Four 26°	575w	SL Side	R3204	1st Electric	3
<b>67</b>	69	Source Four 36°	575w	SL Side	R3204	2nd Electric	1
<b>68</b>	65	Source Four 26°	575w	SL Side	R3204	2nd Electric	3
<b>69</b>	113	Source Four 50° JR	575w	SL Side	R3204	3rd Electric	3
<b>70</b>	115	Source Four 50° JR	575w	SL Side	R3204	3rd Electric	4
<b>71</b>	104	Source Four 26°	575w	SR Side	R53	Truss #2	9
<b>72</b>	102	Source Four 36°	575w	SR Side	R53	Truss #2	11
<b>73</b>	142	Source Four 26°	575w	SR Side	R53	Truss #1	15
<b>74</b>	140	Source Four 36°	575w	SR Side	R53	Truss #1	17
<b>75</b>	51	Source Four 26°	575w	SR Side	R53	1st Electric	17
<b>76</b>	55	Source Four 36°	575w	SR Side	R53	1st Electric	19
<b>77</b>	101	Source Four 26°	575w	SR Side	R53	2nd Electric	11
<b>78</b>	105	Source Four 36°	575w	SR Side	R53	2nd Electric	13
<b>79</b>	149	Source Four 50° JR	575w	SR Side	R53	3rd Electric	16
<b>80</b>	153	Source Four 50° JR	575w	SR Side	R53	3rd Electric	17
<b>81</b>	74	Source Four 36°	575w	SL Texture	R3204	Truss 1	2
<b>82</b>	78	Source Four 36°	575w	SL Texture	R3204	Truss 1	2
<b>83</b>	27	Source Four 36°	575w	SL Texture	R3204	1st Electric	2
<b>84</b>	67	Source Four 36°	575w	SL Texture	R3204	2nd Electric	2
<b>85</b>	106	Source Four 36°	575w	SR Texture	R3204	Truss 1	10
<b>86</b>	146	Source Four 36°	575w	SR Texture	R3204	Truss 1	16
<b>87</b>	53	Source Four 36°	575w	SR Texture	R3204	1st Electric	18
<b>88</b>	103	Source Four 36°	575w	SR Texture	R3204	2nd Electric	12
<b>111</b>	13	Source Four 19°	575w	I-Cue	R132	FOH	6
<b>112</b>	11	Source Four 19°	575w	I-Cue	R132	FOH	4
<b>121</b>	8	Source Four 36°	575w	Aisle	N/C	FOH	1
<b>122</b>	76	Source Four 50°	575w	Aisle	N/C	Truss #2	5
<b>123</b>	14	Source Four 36°	575w	Aisle	N/C	FOH	9
<b>124</b>	96	Source Four 50°	575w	Aisle	N/C	Truss #2	7
<b>125</b>	112	Birdie		SL House Door	N/C	SL Juliet	1
<b>126</b>	57	Birdie		SR House Door	N/C	SR Juliet	1
<b>131</b>	1	Source Four 50° JR	575w	SL Lo	N/C	L Boom #1	6
<b>132</b>	5	Source Four 50° JR	575w	SL Lo	N/C	L Boom #1	7
<b>133</b>	94	Source Four 50° JR	575w	SR Lo	N/C	R Boom #1	6
<b>134</b>	19	Source Four 50° JR	575w	SR Lo	N/C	R Boom #1	7
<b>151</b>	4	Source Four 36°	750w	Seachange	Sea	L Boom #1	4
<b>152</b>	3	Source Four 36°	750w	Seachange	Sea		5
<b>153</b>	92	Source Four 36°	750w	Seachange	Sea		4
<b>154</b>	90	Source Four 36°	750w	Seachange	Sea	R Boom #1	5
<b>161</b>	119	Source Four 36°	575w	Stained Glass Special	N/C	1st Electric	4
<b>162</b>	131	Source Four 36°	575w	Jail Bars	N/C	1st Electric	8
<b>201</b>	2/213-237	MAC Aura	236W	Mover		L Boom #1	3
<b>202</b>	2/138-162	MAC Aura	236W	Mover		Truss #2	4
<b>203</b>	2/38-62	MAC Aura	236W	Mover		Truss #2	6
<b>204</b>	2/13/23	MAC Aura	236W	Mover		Truss #2	8
<b>205</b>	2/188-212	MAC Aura	236W	Mover		R Boom #1	3
<b>206</b>	2/375-399	MAC Aura	236W	Mover		Truss #1	9
<b>207</b>	2/63-87	MAC Aura	236W	Mover		1st Electric	7
<b>208</b>	2/113-137	MAC Aura	236W	Mover		1st Electric	11
<b>209</b>	2/88-112	MAC Aura	236W	Mover		1st Electric	14
<b>210</b>	2/163-187	MAC Aura	236W	Mover		2nd Electric	7

<b>211</b>	2/311	Sixpar 200IP	150	SL LED		L Boom #1	1
<b>212</b>	2/299	Sixpar 200IP	150	SL LED		L Boom #1	2
<b>213</b>	2/323	Sixpar 200IP	150	SL LED		1E Tail Down L	1
<b>214</b>	2/335	Sixpar 200IP	150	SL LED		2E Tail Down L	1
<b>215</b>	2/347	Sixpar 200IP	150	SL LED		3E Tail Down L	1
<b>221</b>	2/239	Sixpar 200IP	150	SR LED		R Boom #1	1
<b>222</b>	2/251	Sixpar 200IP	150	SR LED		R Boom #1	2
<b>223</b>	2/263	Sixpar 200IP	150	SR LED		1E Tail Down R	1
<b>224</b>	2/275	Sixpar 200IP	150	SR LED		2E Tail Down R	1
<b>225</b>	2/287	Sixpar 200IP	150	SR LED		3E Tail Down R	1
<b>231</b>	2/415	Chauvet COLORDash Batten ARC 4	36W	Color Bx		2E Tail Down L	2
<b>232</b>	2/410	Chauvet COLORDash Batten ARC 4	36W	Color Bx		3E Tail Down L	2
<b>233</b>	2/400	Chauvet COLORDash Batten ARC 4	36W	Color Bx		2E Tail Down R	2
<b>234</b>	2/405	Chauvet COLORDash Batten ARC 4	36W	Color Bx		3E Tail Down R	2
<b>301</b>	446	Chroma Q Color Force 72	720W	Cyc Lo		Ground Row	1
<b>302</b>	398	Chroma Q Color Force 72	720W	Cyc Lo		Ground Row	2
<b>303</b>	350	Chroma Q Color Force 72	720W	Cyc Lo		Ground Row	3
<b>304</b>	302	Chroma Q Color Force 72	720W	Cyc Lo		Ground Row	4
<b>305</b>	254	Chroma Q Color Force 72	720W	Cyc Lo		Ground Row	5
<b>311</b>	2/420	Chauvet COLORDash Batten ARC 4	36W	Cyc Hi		3rd Electric	5
<b>312</b>	2/425	Chauvet COLORDash Batten ARC 4	36W	Cyc Hi		3rd Electric	10
<b>313</b>	2/430	Chauvet COLORDash Batten ARC 4	36W	Cyc Hi		3rd Electric	15
<b>500</b>	117,	LED POWER					
<b>998</b>	2/508, 509, 512	WX					
<b>999</b>	2/510, 511	HS					



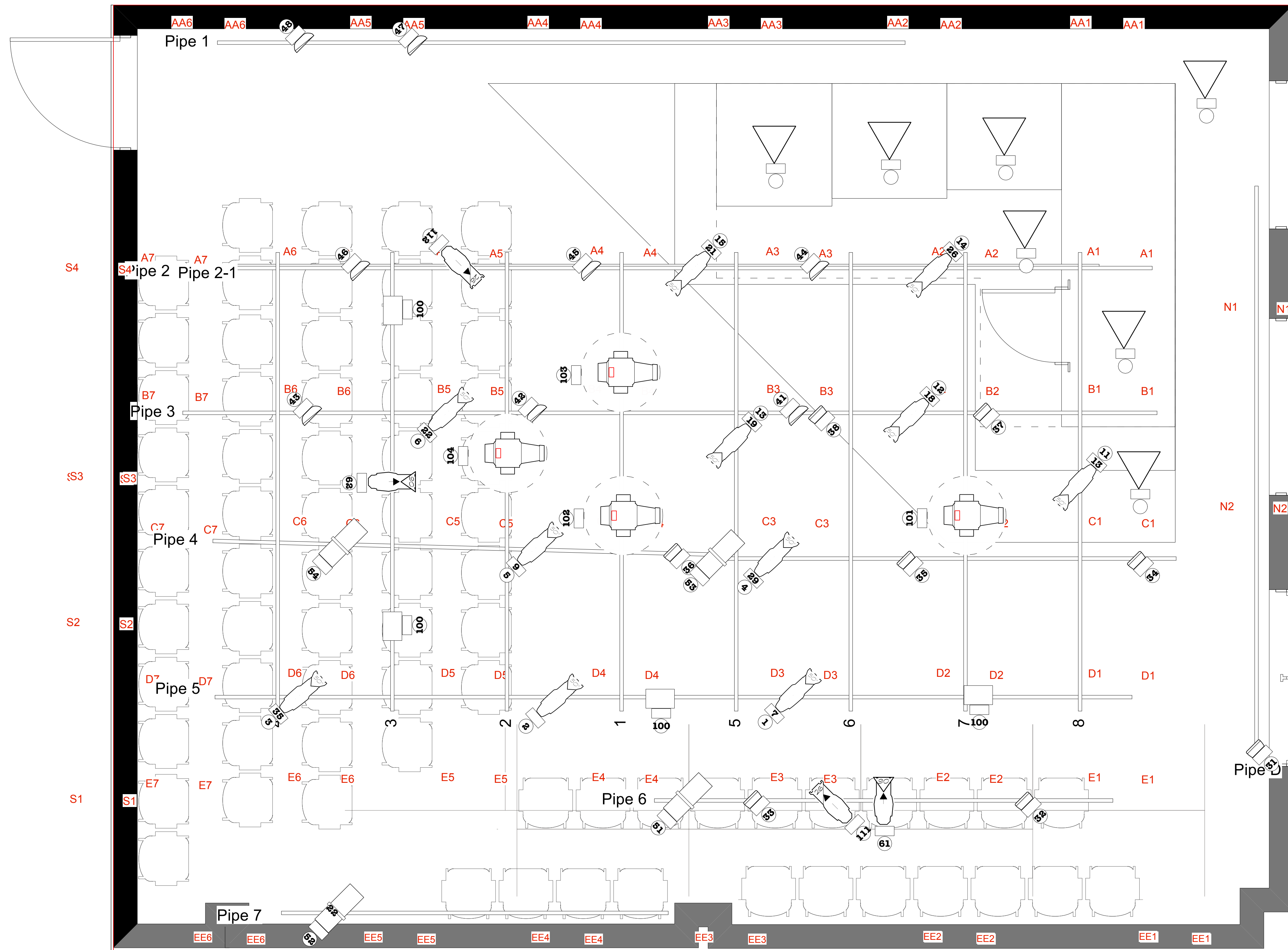
Instruments	
	Mac Aura
	Color-DASH
	Batten
	Eaton SXP/AR
ChromaQ Colorforce T2	
	MR-18 PAR Bide WFL
	Fresnel
	PAR64
ETC Source Four	
	18°
	26°
	36°
	50°
	50° JR
	Beastringer 36°
	Practical
Accessories	
	Rosco I-Cue
	Template
	Ins
Legend	
	Color
	Lighting
	Truss

Notes

- G847 OR R3220
- G888 OR R3202
- R55 or R3204

the COLOR PURPLE PAGE 1 of 1  
 Le Petit Theatre  
**LIGHT PLOT**  
 DIRECTOR: Donald Jones, Jr.  
 SCENIC DESIGNER: Diane Rhodes  
 LIGHTING DESIGNER: Diane K. Boas  
 SCALE: 1/2" = 1'-0"  
 DATE: 5 January, 2023





	ETC Source-4 36° @ 575w	0
	ETC Source-4 50° @ 575w	11
	Chauvet DJ SlimPAR Pro H USB @ 99w	16
	Chauvet SlimPAR Pro Tri @ 100w	8
	Selecon Acclaim Fresnel @ 650w	0
	Cyc 2	4
	Practical	7

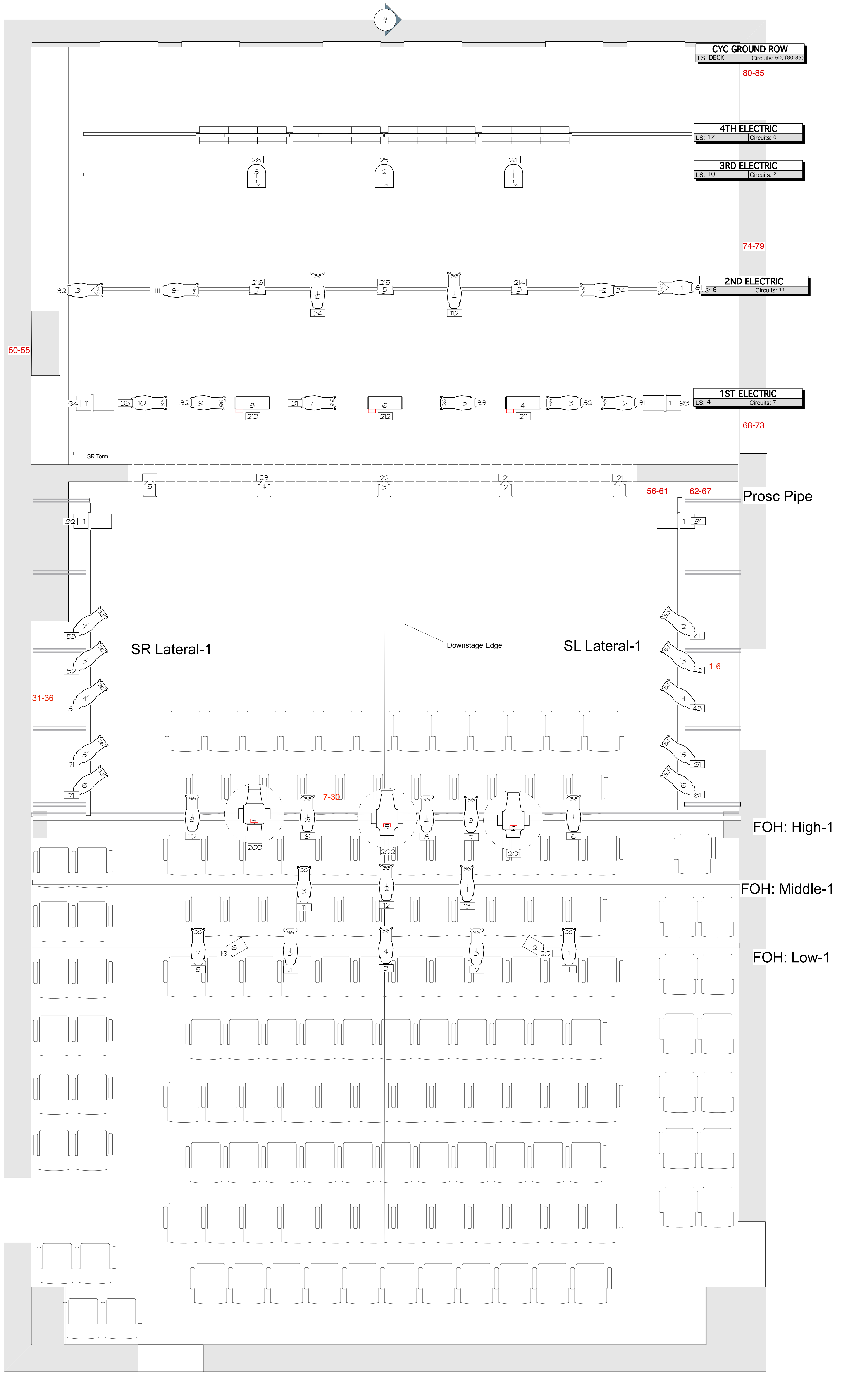
**Typical**

Color  
Walk  
Trash  
Dish  
Chopket

the Night of the Iguana  
 By: Tennessee Williams  
**LIGHT PLOT**  
 DIRECTOR: Augustin Correro  
 SCENIC DESIGNER: Steve Schepker

SCALE: 1/2" = 1' - 0"  
 DATE: 24 February, 2023 Revised:





50-55

**CYC GROUND ROW**  
LS: DECK | Circuits: 6D; (80-85)

80-85

**4TH ELECTRIC**  
LS: 12 | Circuits: 0

**3RD ELECTRIC**  
LS: 10 | Circuits: 2

74-79

**2ND ELECTRIC**  
LS: 6 | Circuits: 11

**1ST ELECTRIC**  
LS: 4 | Circuits: 7

68-73

SR Torn

56-61 62-67

Prosc Pipe

SR Lateral-1

Downstage Edge

SL Lateral-1

31-36

1-6

FOH: High-1

FOH: Middle-1

FOH: Low-1

Channel	Dimmer	Instrument Type	Purpose	Color	Position	Unit Number	
1		19° Source Four	DL Front	R54	FOH Upper	1	
2		19° Source Four	DCL Front	R54	FOH Upper	3	
3		19° Source Four	DC Front	R54	FOH Upper	5	
4		19° Source Four	DCR Front	R54	FOH Upper	8	
5		19° Source Four	DR Front	R54	FOH Upper	10	
6		19° Source Four	L Front	R54	FOH Lower	1	
7		19° Source Four	CL Front	R54	FOH Lower	2	
8		19° Source Four	C Front	R54	FOH Lower	3	
9		19° Source Four	CR Front	R54	FOH Lower	4	
10		19° Source Four	R Front	R54	FOH Lower	5	
21		S4 PAR WFL	DL Wm Bx	R321	2nd Electric	5	
22		S4 PAR WFL	DC Wm Bx	R321	2nd Electric	8	
		S4 PAR WFL	DC Wm Bx	R321	2nd Electric	13	
23		S4 PAR WFL	DR Wm Bx	R321	2nd Electric	16	
24		S4 PAR WFL	UL Wm Bx	R321	4th Electric	4	
25		S4 PAR WFL	UC Wm Bx	R321	4th Electric	8	
26		S4 PAR WFL	UR Wm Bx	R321	4th Electric	13	
31		S4 PAR WFL	DL N Bx	R55	2nd Electric	6	
32		S4 PAR WFL	DC N Bx	R55	2nd Electric	9	
		S4 PAR WFL	DC N Bx	R55	2nd Electric	14	
33		S4 PAR WFL	DR N Bx	R55	2nd Electric	17	
34		S4 PAR WFL	US N Bx	R55	4th Electric	5	
		S4 PAR WFL	US N Bx	R55	4th Electric	14	
		S4 PAR WFL	US N Bx	R55	4th Electric	10	
41		S4 PAR WFL	DL Cool Bx	R78	2nd Electric	7	
42		S4 PAR WFL	DC Cool Bx	R78	2nd Electric	10	
		S4 PAR WFL	DC Cool Bx	R78	2nd Electric	15	
43		S4 PAR WFL	DR Cool Bx	R78	2nd Electric	18	
44		S4 PAR WFL	UL Cool Bx	R78	4th Electric	6	
45		S4 PAR WFL	UC Cool Bx	R78	4th Electric	11	

Channel	Dimmer	Instrument Type	Purpose	Color	Position	Unit Number	
46		S4 PAR WFL	UR Cool Bx	R78	4th Electric	15	
51		6" Fresnel	Top W L	R321	Apron Pipe	1	
52		6" Fresnel	Top W C	R321	Apron Pipe	5	
53		6" Fresnel	Top W C	R321	Apron Pipe	10	
54		6" Fresnel	Top W R	R321	Apron Pipe	14	
55		6" Fresnel	Top C L	L200	Apron Pipe	2	
56		6" Fresnel	Top C C	L200	Apron Pipe	6	
57		6" Fresnel	Top C C	L200	Apron Pipe	11	
58		6" Fresnel	Top C R	L200	Apron Pipe	15	
61		6" Fresnel	MS Drops C Wm	R321	3rd Electric	6	
62		6" Fresnel	MS Drops Wm	R321	3rd Electric	12	
		6" Fresnel	MS Drops Wm	R321	3rd Electric	2	
63		6" Fresnel	MS Drops C N	R355	3rd Electric	8	
64		6" Fresnel	MS Drops N	R355	3rd Electric	13	
		6" Fresnel	MS Drops N	R355	3rd Electric	3	
65		6" Fresnel	MS Drops C Cool	L200	3rd Electric	9	
66		6" Fresnel	MS Drops Cool	L200	3rd Electric	14	
		6" Fresnel	MS Drops Cool	L200	3rd Electric	4	
67		14" Scoop	Cyc 1	R80	Cyc E	7	
		14" Scoop	Cyc 1	R80	Cyc E	10	
		14" Scoop	Cyc 1	R80	Cyc E	4	
		14" Scoop	Cyc 1	R80	Cyc E	1	
68		14" Scoop	Cyc 2		Cyc E	8	
		14" Scoop	Cyc 2		Cyc E	11	
		14" Scoop	Cyc 2		Cyc E	5	
		14" Scoop	Cyc 2		Cyc E	2	
69		14" Scoop	Cyc 3	R26	Cyc E	9	
		14" Scoop	Cyc 3	R26	Cyc E	12	
		14" Scoop	Cyc 3	R26	Cyc E	6	
		14" Scoop	Cyc 3	R26	Cyc E	3	

Channel	Dimmer	Instrument Type	Purpose	Color	Position	Unit Number	
71		26° Source Four	SL Side W DSL	R04	HR Box Boom	6	
72		26° Source Four	SL Side W DSR	R04	HR Box Boom	1	
73		36° Source Four	SL Side W DS	R04	1st Electric	1	
74		36° Source Four	SL Side W MS	R04	2nd Electric	1	
75		36° Source Four	SL Side W US	R04	4th Electric	1	
76		26° Source Four	SR Side W DSL	R04	HL Box Boom	2	
77		26° Source Four	SR Side W DSR	R04	HL Box Boom	6	
78		36° Source Four	SR Side W DS	R04	1st Electric	19	
79		36° Source Four	SR Side W MS	R04	2nd Electric	22	
80		36° Source Four	SR Side W US	R04	4th Electric	18	
81		26° Source Four	SL Side C DSL	L201	HR Box Boom	7	
82		26° Source Four	SL Side C DSR	L201	HR Box Boom	2	
83		36° Source Four	SL Side C DS	L201	1st Electric	2	
84		36° Source Four	SL Side C MS	L201	2nd Electric	2	
85		36° Source Four	SL Side C US	L201	4th Electric	2	
86		26° Source Four	SR Side C DSL	L201	HL Box Boom	1	
87		26° Source Four	SR Side C DSR	L201	HL Box Boom	7	
88		36° Source Four	SR Side C DS	L201	1st Electric	18	
89		36° Source Four	SR Side C MS	L201	2nd Electric	21	
90		36° Source Four	SR Side C US	L201	4th Electric	17	
101		19° Source Four	DL Special	N/C	FOH Upper	2	
102		19° Source Four	DCL Special	N/C	FOH Upper	4	
103		19° Source Four	DC Special	N/C	FOH Upper	6	
104		19° Source Four	DCR Special	N/C	FOH Upper	7	
105		19° Source Four	DR Special	N/C	FOH Upper	9	
106		50° Source Four	SL Special	N/C	Apron Pipe	4	
107		36° Source Four	CL Special	N/C	Apron Pipe	7	
108		36° Source Four	C Special	N/C	Apron Pipe	8	
109		36° Source Four	CR Special	N/C	Apron Pipe	9	
110		36° Source Four	SR Special	N/C	Apron Pipe	12	

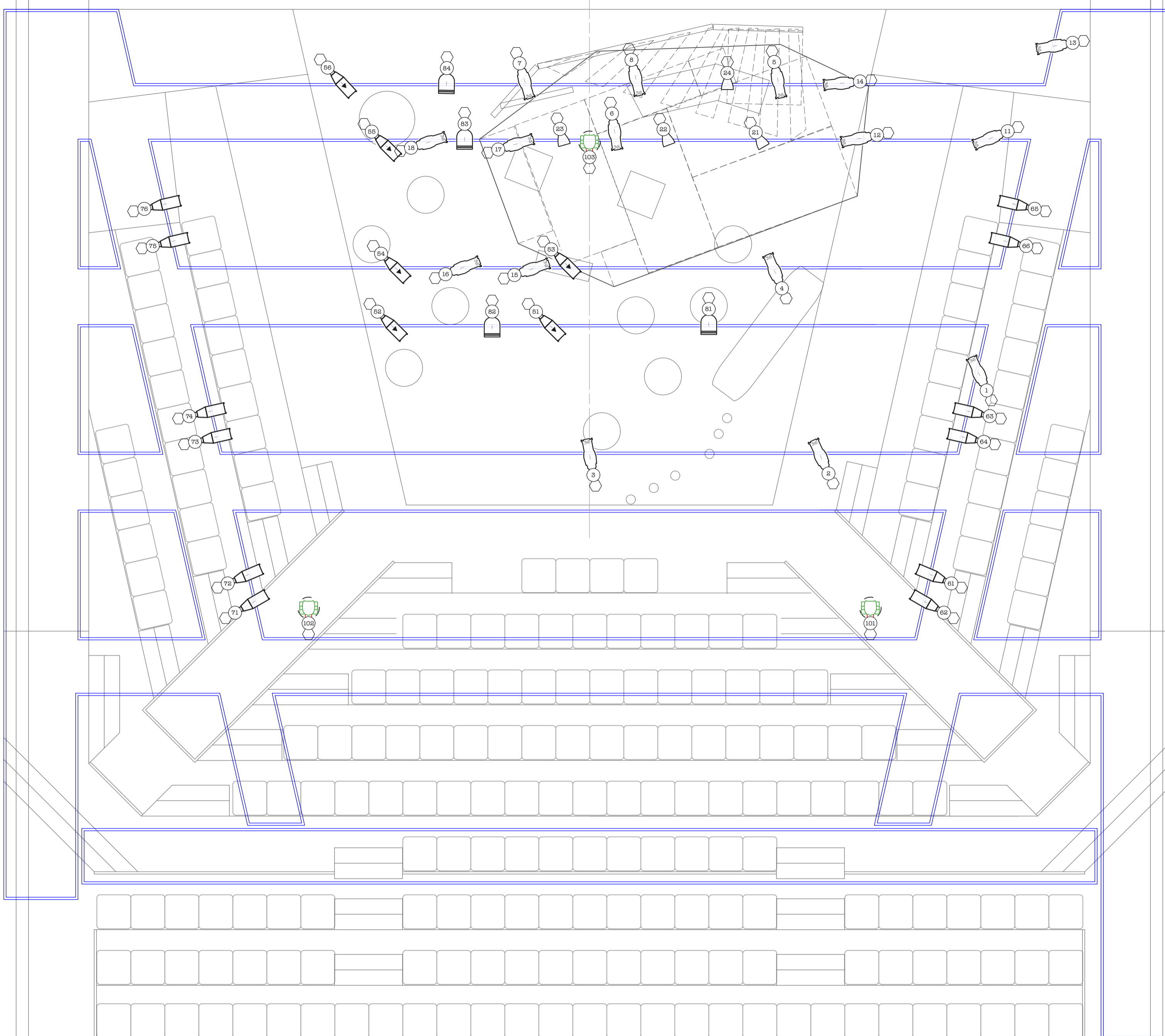
Channel	Dimmer	Instrument Type	Purpose	Color	Position	Unit Number	
111		26° Source Four	L Down Special	N/C	1st Electric	4	
112		26° Source Four	CL Down Special	N/C	1st Electric	9	
113		26° Source Four	C Down Special	N/C	1st Electric	10	
114		26° Source Four	CR Down Special	N/C	1st Electric	11	
115		26° Source Four	R Down Special	N/C	1st Electric	16	
116		36° Source Four	DC Back Special	N/C	2nd Electric	11	
117		36° Source Four	UR Stair Special	N/C	3rd Electric	5	
118		36° Source Four	UC Special	N/C	3rd Electric	10	
119		36° Source Four	UL Stair Special	N/C	3rd Electric	11	
123		36° Source Four	DS Texture	N/C	1st Electric	3	
124		50° Source Four	W X	R05	1st Electric	5	
125		50° Source Four	News Texture	N/C	1st Electric	7	
126		50° Source Four	C X	R362	1st Electric	8	
127		50° Source Four	C X	R362	1st Electric	12	
128		50° Source Four	News Texture	N/C	1st Electric	13	
129		50° Source Four	W X	R05	1st Electric	15	
130		50° Source Four	DS Texture	N/C	1st Electric	17	
131		50° Source Four	US Texture	N/C	3rd Electric	1	
132		50° Source Four	US Texture	N/C	3rd Electric	15	
141		36° Source Four	Platform Side W	R05	2nd E Taildown SL		
142		36° Source Four	Platform Side W	R05	2nd E Taildown SR		
143		36° Source Four	Platform Side C	R362	2nd E Taildown SL		
144		36° Source Four	Platform Side C	R362	2nd E Taildown SR		
151		26° Source Four	SL Side W DS	R04	HR Box Boom	9	
152		6x12	SL Side W MS	R04	SR Curtain Track	1	






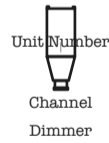
Channel	Dimmer	Instrument Type	Purpose	Color	Position	Unit Number	
153		6x12	SL Side W US	R04	SR Curtain Track	1	
154		26° Source Four	SR Side W DS	R04	HL Box Boom	8	
155		6x12	SR Side W MS	R04	SR Curtain Track	1	
156		6x12	SR Side W US	R04	SR Curtain Track	1	
161		26° Source Four	SL Side C DS	R355	HR Box Boom	8	
162		6x12	SL Side C MS	R355	SR Curtain Track	2	
163		6x12	SL Side C US	R355	SR Curtain Track	2	
164		26° Source Four	SR Side C DS	R355	HL Box Boom	9	
165		6x12	SR Side C MS	R355	SR Curtain Track	2	
166		6x12	SR Side C US	R355	SR Curtain Track	2	
181		S4 PAR NSP	DS X Wash W	R05	HR Box Boom	3	
182		S4 PAR NSP	DS X Wash W	R05	HL Box Boom	3	
183		S4 PAR NSP	DS X Wash C	R362	HR Box Boom	5	
184		S4 PAR NSP	DS X Wash C	R362	HL Box Boom	5	
201		Chauvet SlimPar 67			HR Box Boom		
202		Chauvet SlimPar 67			HR Box Boom		
203		Chauvet SlimPar 67			HL Box Boom		
204		Chauvet SlimPar 67			HL Box Boom		
211		K9 Bulldog			2nd Electric	3	
212		K9 Bulldog			2nd Electric	3	










	36°^
	Berkey Colortran
	K9 Pup 45
	ETC ColorSource PAR Medium Oval @ 90w
	Light Instr Elation E Spot LED @ 180w
<i>Typical</i>	
 Unit Number Channel Dimmer	

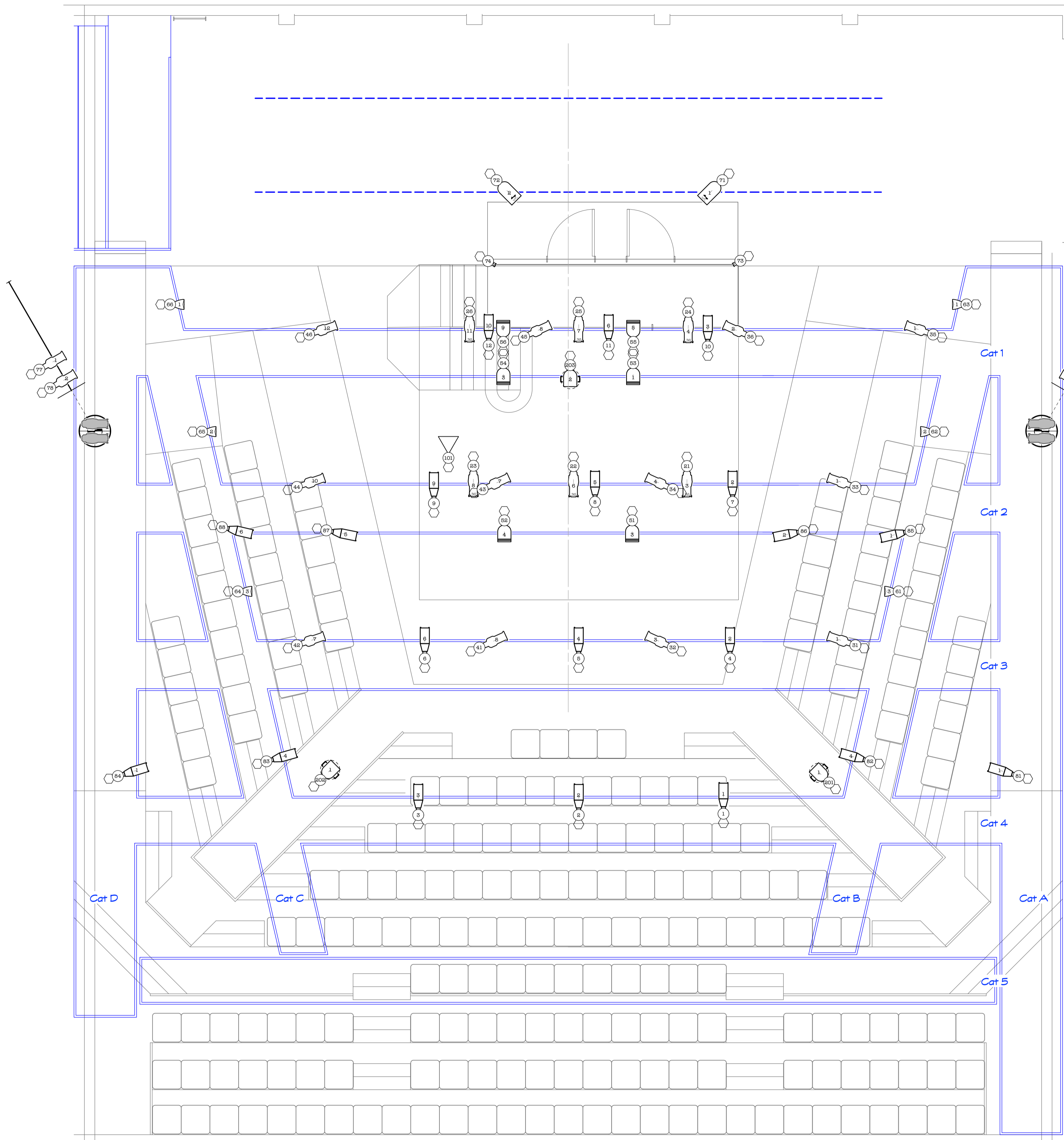
Picasso at the Lapin Agile PAGE  
1 of 1

By  
Steve Martin  
**LIGHT PLOT**

DIRECTOR: David W. Hoover  
SCENIC DESIGNER: Jacob Bensimon  
LIGHTING DESIGNER: Diane K. Baas

SCALE: 1/2" = 1' - 0" 

DATE: 22 February, 2023 Revised:



**Symbol Key**

Light		
	3" Fresnel	2
	Berkey Colortran	20
	6x9 Axial ^ v	16
	36°^A	6
	Elation E-Spot	3
	K9 Pup 45	6
	Par64 WFL ^ Horiz	2
	ETC ColorSource PAR Wide Oval	6
	Practical	1
Static Accessory		
	Template	0

**Typical**

	Unit Number Channel Dimmer
--	-------------------------------

**Color Summary**

Color	Size	Count	
	R08	Berkey	1
	R08	Berkey Colortran	3
	R33		6
	R51	Berkey Colortran	12
	R55		6
	R362	36° Source Four	6
	R365	Berkey Colortran	4

House Lights= Ch 100, Dim 180,181,183,184  
Work Lights= Ch 99 85,93,179,182

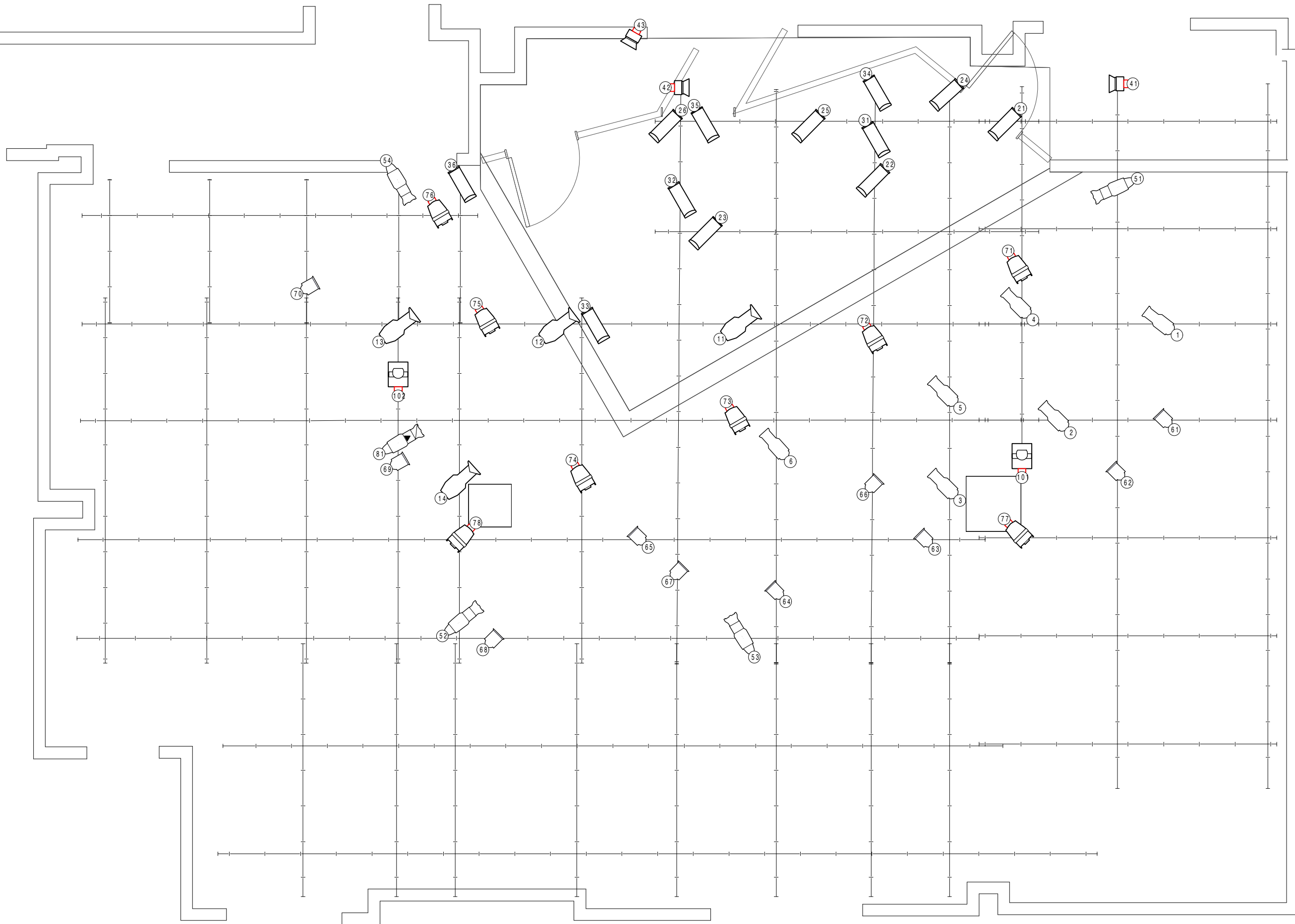
<p><b>SHE STOOPS TO CONQUER</b> By: Oliver Goldsmith <b>LIGHT PLOT</b> DIRECTOR: Madison Smith SCENIC DESIGNER: Jacob Bensimon LIGHTING DESIGNER: Diane Baas SCALE: 1/4" = 1' - 0" DATE: March 29, 2024</p>	PAGE
	1 of 1
	Revised

**She Stoops to Conquer Channel Hookup**

Channel	Dimmer	Instrument Type	Wattage	Purpose	Color	Position	Unit #
1		Berkey Colortran		Front	R51	Cat 4	1
2		Berkey Colortran		Front	R51	Cat 4	2
3		Berkey Colortran		Front	R51	Cat 4	3
4		Berkey Colortran		Front	R51	Cat 3	2
5		Berkey Colortran		Front	R51	Cat 3	4
6		Berkey Colortran		Front	R51	Cat 3	6
7		Berkey Colortran		Front	R51	Cat 2	2
8		Berkey Colortran		Front	R51	Cat 2	5
9		Berkey Colortran		Front	R51	Cat 2	9
10		Berkey Colortran		Front	R51	Cat 1	3
11		Berkey Colortran		Front	R51	Cat 1	6
12		Berkey Colortran		Front	R51	Cat 1	10
21		36° Source Four	575	BX	R362	Cat 2	3
22		36° Source Four	575	BX	R362	Cat 2	6
23		36° Source Four	575	BX	R362	Cat 2	8
24		36° Source Four	575	BX	R362	Cat 1	4
25		36° Source Four	575	BX	R362	Cat 1	7
26		36° Source Four	575	BX	R362	Cat 1	11
31		Altman 6x9		Sides	R33	Cat 3	1
32		Altman 6x9		Sides	R33	Cat 3	3
33		Altman 6x9		Sides	R33	Cat 2	1
34		Altman 6x9		Sides	R33	Cat 2	4
35		Altman 6x9		Sides	R33	Cat 1	1
36		Altman 6x9		Sides	R33	Cat 1	2
41		Altman 6x9		Sides	R55	Cat 3	5
42		Altman 6x9		Sides	R55	Cat 3	7
43		Altman 6x9		Sides	R55	Cat 2	7
44		Altman 6x9		Sides	R55	Cat 2	10
45		Altman 6x9		Sides	R55	Cat 1	8
46		Altman 6x9		Sides	R55	Cat 1	12
51		K9 Pup		Color Bx/Top	LED	Cat 2b	3
52		K9 Pup		Color Bx/Top	LED	Cat 2b	4
53		K9 Pup		Color Bx/Top	LED	Cat 1b	1
54		K9 Pup		Color Bx/Top	LED	Cat 1b	3
55		K9 Pup		Color Bx/Top	LED	Cat 1	5
56		K9 Pup		Color Bx/Top	LED	Cat 1	9
61		ColorSource PAR	90W	Color Sides	LED	Cat B	3
62		ColorSource PAR	90W	Color Sides	LED	Cat B	2
63		ColorSource PAR	90W	Color Sides	LED	Cat B	1
64		ColorSource PAR	90W	Color Sides	LED	Cat C	3
65		ColorSource PAR	90W	Color Sides	LED	Cat C	2
66		ColorSource PAR	90W	Color Sides	LED	Cat C	1
71		PAR WFL		Door Back SL	R08	1st Electric	1
72		PAR WFL		Door Back SR	R08	1st Electric	2
73		Birdie		Doorway C	R08	Set Mount	1
74		Birdie		Doorway C	R08	Set Mount	2
75		Altman 6x9		L Lo Side US	R55	L Torm	1
76		Altman 6x9		L Lo Side DS	R55	L Torm	2
77		Altman 6x9		R Lo Side US	R33	R Torm,	1
78		Altman 6x9		R Lo Side DS	R33	R Torm,	2
81		Berkey Colortran		outside	R365	Cat A	1
82		Berkey Colortran		outside	R365	Cat B	4
83		Berkey Colortran		outside	R08	Cat C	4
84		Berkey Colortran		outside	R08	Cat D	1
85		Berkey Colortran		outside	R08	Cat 2b	1
86		Berkey Colortran		outside	R08	Cat 2b	2
87		Berkey Colortran		outside	R365	Cat 2b	5
88		Berkey Colortran		outside	R365	Cat 2b	6
101		Custom/Practical		Fireplace	R318	Fireplace	1
201		Mover		Mover	Mover	Mover Pipe L	1
202		Mover		Mover	Mover	Mover Pipe R	1
203		Mover		Mover	Mover	Cat 1b	2






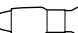
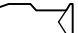
	A View From the Bridge						May 13, 2018
			Channel Hookup				
	Channel	Instrument Type	Wattage	Purpose	Color	Position	Unit Number
	1	A1+ 360Q 6x9	750W	Front DL			
	2	A1+ 360Q 6x9	750W	Front DCL			
	3	A1+ 360Q 6x9	750W	Front DC			
	4	A1+ 360Q 6x9	750W	Front L			
	5	A1+ 360Q 6x9	750W	Front C			
	6	A1+ 360Q 6x9	750W	Front R			
	11	USITT Enhanced ERS 50	750W	R Front L			
	12	USITT Enhanced ERS 50	750W	R Front C			
	13	USITT Enhanced ERS 50	750W	R Front R			
	14	USITT Enhanced ERS 50	750W	R Front DC			
	21	Selecon PLFresnel1 LED	150W	L BX DL			
	22	Selecon PLFresnel1 LED	150W	L BX DC			
	23	Selecon PLFresnel1 LED	150W	L BX DR			
	24	Selecon PLFresnel1 LED	150W	L BX L			
	25	Selecon PLFresnel1 LED	150W	L BX C			
	26	Selecon PLFresnel1 LED	150W	L BX R			
	31	Selecon PLFresnel1 LED	150W	R BX DL			
	32	Selecon PLFresnel1 LED	150W	R BX DC			
	33	Selecon PLFresnel1 LED	150W	R BX DR			
	34	Selecon PLFresnel1 LED	150W	R BX L			
	35	Selecon PLFresnel1 LED	150W	R BX C			
	36	Selecon PLFresnel1 LED	150W	R BX R			
	41	Chauvet LEDrain 59	8W	Thru Door L			
	42	Chauvet LEDrain 59	8W	Thru Door C			
	43	Chauvet LEDrain 59	8W	Thru Door R			
	51	ETC CE Source4 36deg	575W	Steps			

	52	ETC CE Source4 36deg	575W	Steps			
	53	ETC CE Source4 36deg	575W	Steps			
	54	ETC CE Source4 36deg	575W	Steps			
	61	Altman 65Q 6in Fresnel	750W	Street Front L			
	62	Altman 65Q 6in Fresnel	750W	Street Front C			
	63	Altman 65Q 6in Fresnel	750W	Street Front LC			
	64	Altman 65Q 6in Fresnel	750W	Street Front C			
	65	Altman 65Q 6in Fresnel	750W	Street Front UR			
	66	Altman 65Q 6in Fresnel	750W	R Street Front L			
	67	Altman 65Q 6in Fresnel	750W	R Street Front LC			
	68	Altman 65Q 6in Fresnel	750W	R Street Front DC			
	69	Altman 65Q 6in Fresnel	750W	R Street Front R			
	70	Altman 65Q 6in Fresnel	750W	R Street Front UR			
	71	SL PAR 150 ZOOM Hang	150W	Street Top			
	72	SL PAR 150 ZOOM Hang	150W	Street Top			
	73	SL PAR 150 ZOOM Hang	150W	Street Top			
	74	SL PAR 150 ZOOM Hang	150W	Street Top			
	75	SL PAR 150 ZOOM Hang	150W	Street Top			
	76	SL PAR 150 ZOOM Hang	150W	Street Top			
	77	SL PAR 150 ZOOM Hang	150W	Exterior			
	78	SL PAR 150 ZOOM Hang	150W	Exterior			
	81	ETC Source4 26deg	575W	Window Gobo			
	101	Chauvet Rogue R1 Wash	161W	Mover			
	102	Chauvet Rogue R1 Wash	161W	Mover			

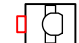
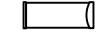


Symbol Key

Light

-  Altman 65Q 6in Fresnel @ 750w
-  Altman 360Q 6x9 @ 750w
-  ETC CE Source4 36deg @ 575w
-  ETC CE Source4 PAR MCM (WFL) @ 575w
-  ETC Source4 26deg @ 575w
-  ETC Source4 36deg @ 575w
-  USITT Enhanced ERS 50 @ 750w

Intelligent Lights

-  Chauvet Rogue R1 Wash @ 161w
-  Chauvet LEDrain 58 @ 8w
-  Selecon PLFresnel1 LED @ 150w
-  SL PAR 150 ZOOM Hang @ 150w

Typical



A View From the Bridge

PAGE  
1 of 1

By:  
Arthur Miller  
**LIGHT PLOT**  
DIRECTOR: Gerard Stropnický  
SCENIC DESIGNER: Cody Gilliam  
LIGHTING DESIGNER: Diane K. Baas  
SCALE: 1/2" = 1' - 0"  
DATE: 13 May 2018 Revised: